

CENTER LINE SURVEY PLAT

GUERNSEY COUNTY MADISON TOWNSHIP

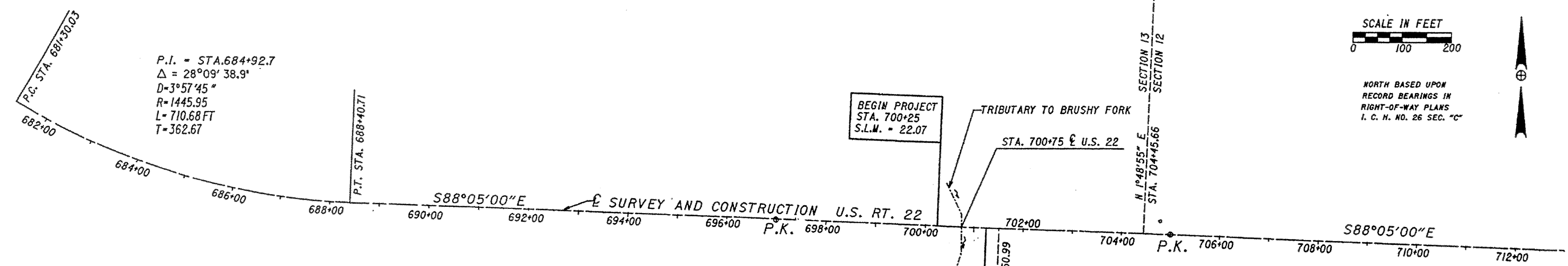
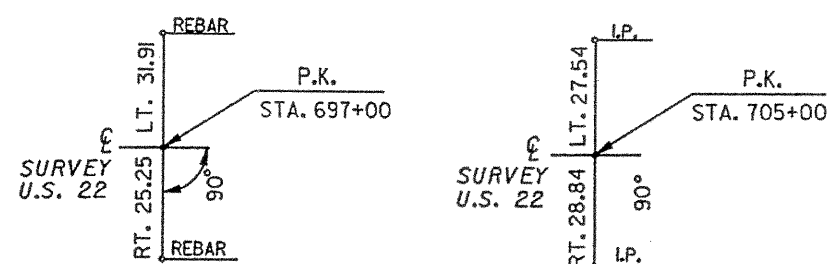
R1, T3, SEC. 12 & 13
GUE-22-22.07

CALC BY: _____
 DATE: _____
 CHD BY: _____
 DATE: _____

OHIO
 FHWA
 REGION 5

1
 3

RIGHT OF WAY PLANS
 STATE PROJECT 050600



NORTH BASED UPON
 RECORD BEARINGS IN
 RIGHT-OF-WAY PLANS
 I. C. H. NO. 26 SEC. "C"

- LEGEND**
- P.K. FOUND
 - ◊ CORNER POST FOUND

NOT TO SCALE

3" x 30" REBAR WITH CAP ARE TO BE PLACED ON THE RIGHT-OF-WAY AT THE FOLLOWING LOCATIONS PRIOR TO CONSTRUCTION.

STA. 699+50.00	30' LT.
STA. 700+40.00	60' LT.
STA. 700+75.00	80' LT.
STA. 702+25.00	30' LT.
STA. 702+25.00	35' LT.
STA. 699+50.00	40' RT.
STA. 699+50.00	30' RT.
STA. 701+51.07	30' RE
STA. 701+51.07	54.79' RT
STA. 701+00.00	65' RT.
STA. 700+50.00	65' RT.

BEGIN PROJECT
STA. 700+25
S.L.M. = 22.07

END PROJECT
STA. 701+25
S.L.M. = 22.09



NOTE: LOCATION PLAN RECORDED IN GUERNSEY COUNTY I.C.H. NO. 26 SEC. C RIGHT OF-WAY PLANS

I HEREBY CERTIFY THAT THIS PLAT IS A TRUE DELINEATION OF A SURVEY PERFORMED FOR THE STATE OF OHIO, DEPARTMENT OF TRANSPORTATION IN 1911/1912 BY DISTRICT 5, OHIO DEPARTMENT OF TRANSPORTATION

Stephen M. Bowman Sept. 4, 1992
 REGISTERED SURVEYOR NO. DATE
 STEPHEN BOWMAN, P.S. #7135

RECEIVED AT
 RECORDED 12-30-93 FILE NO.
 PLAT BOOK 3 PAGES A-38 A
 SIGNED COUNTY RECORDER GUERNSEY COUNTY, OHIO

REV#	DATE	DESCRIPTION

TOTAL NUMBER OF:

- 3 OWNERSHIPS
- 0 TOTAL TAKES
- 0 OWNERSHIPS WITH STRUCTURES INVOLVED
- 0 OWNERSHIPS WITH "P" ITEMS

SUMMARY OF ADDITIONAL RIGHT OF WAY PID: 5012

PARCEL	OWNER	SHEET NO.	OWNERS RECORD BOOK	PAGE	RECORD AREA	TOTAL P.R.O.	GROSS TAKE	P.R.O. IN TAKE	NET TAKE	STRUC-TURE	NET RESIDUE LEFT	RIGHT	TYPE FUND	AUDITORS PARCEL NUM.	REMARKS AND PERSONALITY
1	GEORGE W. LONG JR. AND HELEN LONG	3	229	632	62.38 AC.	0.737 AC.	.158 AC.	0.00 AC.	.158 AC.		61.485 AC.			22-00769	OR-60-1027
1-X							.045 AC.	0.00 AC.	.045 AC.						TO CONSTRUCT AND MAINTAIN CHANNEL OR-60-1025
2	JOHN EDWARD JOHNSON AND ANNA LEE JOHNSON	3	294	440	130 AC.	1.13 AC.	.127 AC.	0.00 AC.	.127 AC.		128.743 AC.			22-00156	OR-60-1018
2-X							.023 AC.	0.00 AC.	.023 AC.						TO CONSTRUCT AND MAINTAIN CHANNEL OR-60-1016
3T	JOAN BOND, RANDY RABER AND THOMAS PENKOWSKI, TRUSTEES	3	10	887	67.989 AC.	.91 AC.	0.30 AC.	0.00 AC.	.030 AC.		67.079 AC.			22-00816	

022222.rwl.dgn 09/04/92 (ROW)